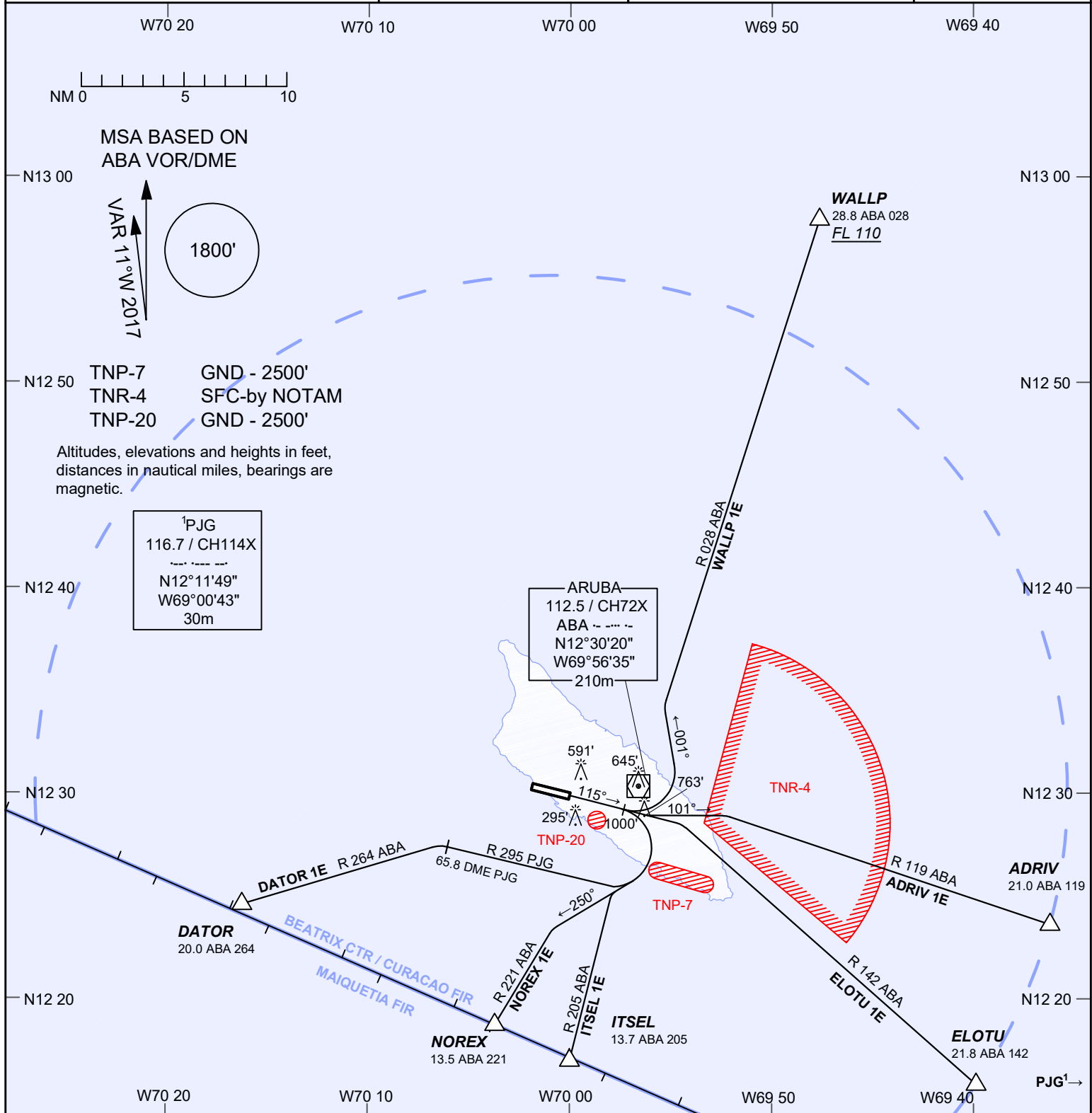


AIP DUTCH CARIBBEAN

VOR DEPARTURES RWY 11	AD ELEVATION: 62' TRANS LEVEL: FL 40 TRANS ALT: 2500' (2438')	BEATRIX: TWR 118.0 APP 120.9 APRON 121.6 ATIS 132.1	REINA BEATRIX INT'L (TNCA) ARUBA
-----------------------	---	---	--



ADRIV1E
Climb on runway magnetic track 115°, at or above 1000' turn left to magnetic track 101° to intercept and follow R-119 ABA to ADRIV (21.0 DME ABA). Requires minimum 255fpm until 1100'. Advise ATC if unable to climb above TNR-4 ceiling prior to crossing boundary.

DATOR1E
Climb on runway magnetic track 115°, at or above 1000' turn right to intercept and follow R-295 PJG up to 65.8 DME PJG. Turn left to intercept and follow R-264 ABA to DATOR (20.0 DME ABA). Requires minimum 255fpm until 1100'.

ELOTU1E
Climb on runway magnetic track 115°, at or above 1000' intercept and follow R-142 ABA to ELOTU (21.8 DME ABA). Requires minimum 255fpm until 1100'.

ITSEL1E
Climb on runway magnetic track 115°, at or above 1000' turn right to magnetic track 250° to intercept and follow R-205 ABA to ITSEL (13.7 DME ABA). Requires minimum 255fpm until 1100'.

NOREX1E
Climb on runway magnetic track 115°, at or above 1000' turn right to magnetic track 250° to intercept and follow R-221 ABA to NOREX (13.5 DME ABA). Requires minimum 255fpm until 1100'.

WALLP1E
Climb on runway magnetic track 115°, at or above 1000' turn left to magnetic track 001° to intercept and follow R-028 ABA to WALLP (28.8 DME ABA) at or above FL110. After passing WALLP, expect ATC instructions to first en-route waypoint. Requires minimum 255fpm until 1100'.